

*Promote health . Keep the world safe . Serve the vulnerable*

# GACD technical workshop

## Context and policy making

Dr. Sarah Rylance

Medical Officer

NCD Management Unit, WHO Headquarters



**World Health  
Organization**

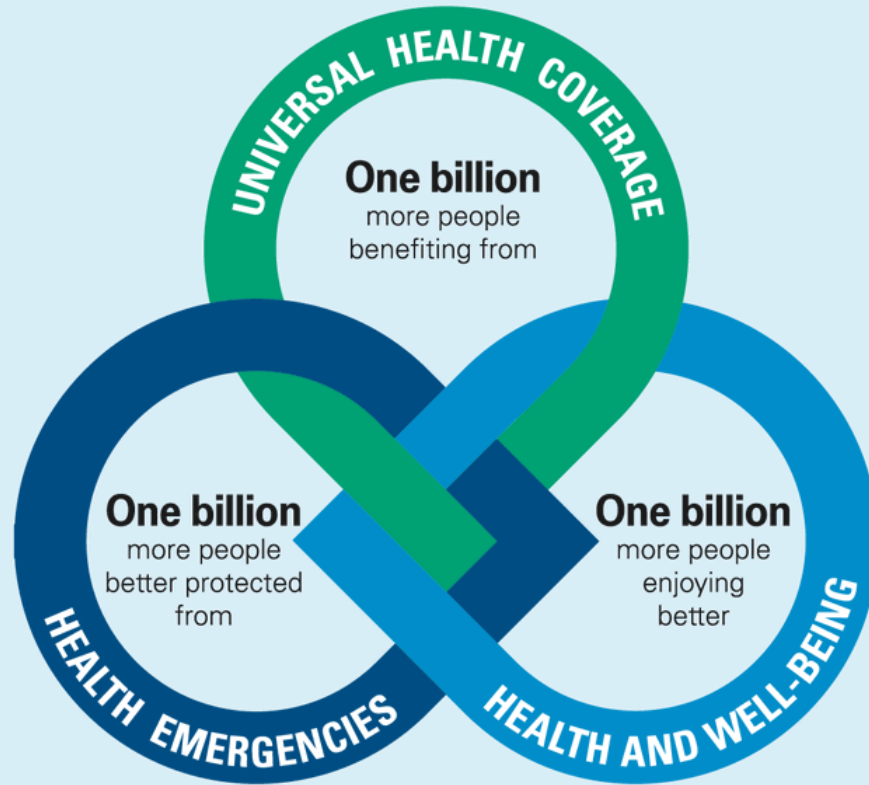
# How does WHO make recommendations?

- Background to WHO
- [13<sup>th</sup> General Programme of Work](#)
- Strategic shifts
  - Leadership
  - Technical products
  - Country support
- Guideline development process
- The importance of local context

# World Health Organization

- International public health agency: 1948 Constitution
- United Nations agency connecting nations, partners and people to promote health, keep the world safe and serve the vulnerable
- Headquarters, 6 regional offices, 150 country offices
- World Health Assembly is the decision-making body of WHO, attended by delegations from all Member States
- Functions of the WHA
  - Determine the policies of the Organization
  - Appoint the Director-General
  - Supervise financial policies
  - Review and approve the proposed programme budget

# 13<sup>th</sup> General Programme of Work



World Health Organization

THIRTEENTH GENERAL PROGRAMME OF WORK 2019-2023

**PROMOTE**  
**HEALTH**  
**KEEP THE WORLD**  
**SAFE**  
**SERVE THE**  
**VULNERABLE**



World Health Organization

## STRATEGIC SHIFTS

DRIVING PUBLIC HEALTH IMPACT IN EVERY COUNTRY  
differentiated approach based on capacity and vulnerability

### STEPPING UP LEADERSHIP

diplomacy and advocacy;  
gender equality,  
health equity and human rights;  
multisectoral action; finance



#### Policy dialogue

to develop systems of the future

#### Strategic support

to build high performing systems

#### Technical assistance

to build national institutions

#### Service delivery

to fill critical gaps in emergencies



### FOCUSING GLOBAL PUBLIC GOODS ON IMPACT

normative guidance and agreements;  
data, research and innovation



**Mature health system**

**Fragile health system**

# Development of global guidelines

- Development of global guidelines, ensuring the appropriate use of evidence is a core function
- Information produced by WHO containing recommendations for clinical practice or public health policy
- Guideline Review Committee
- WHO handbook for guideline development
- Steering group, guideline development group, external review group
- Systematic review team, guideline methodologist
- Key questions (PICO) and priority outcomes

# Moving from evidence to recommendations

- GRADE: Grading of Recommendations Assessment, Development and Evaluation
- RCTs preferred source of evidence
- Non-randomized trials and observational studies, including interrupted time-series analyses, cohort and case-control studies, cross-sectional studies, case series and case reports.

# Moving from evidence to recommendations

- Quality of the evidence
- Values and preferences
- Balance of benefits and harms
- Resource implications
- Priority of the problem
- Equity and human rights
- Acceptability
- Feasibility



Strong



Conditional

# Importance of local context

- Adaptation of global guidance to regional, sub-regional, national level
- Demonstrate relevance to policy makers
- Consider conditional recommendations relating to a specific environment/audience
- Research agenda should be determined by local needs
  - What are the questions that policy makers and health system planners need answers to